



- Victorian style end of terrace property
- Three bedrooms
- Open plan lounge / diner

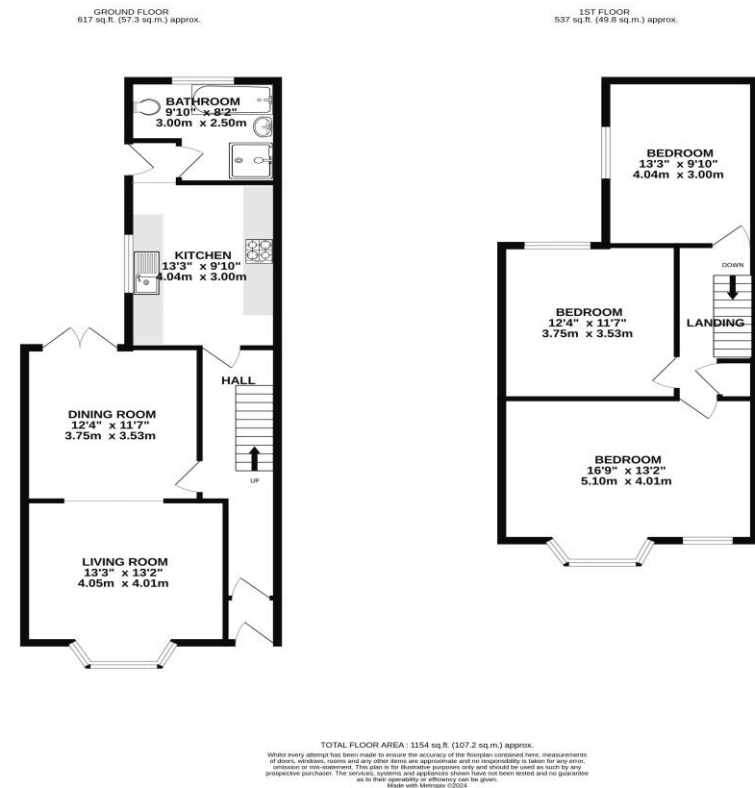
- Ground floor bathroom
- Popular road in Redfield
- Large garden with gated side access

Parks sales and lettings are delighted to welcome to market this wonderful three-bedroom Victorian style home located on one of the most popular roads in Redfield. Just a short stroll from Church Road's amenities, cafes and bars, this is a home of decent proportions with a generous sized garden.

On the ground floor the property boasts a wonderful bay fronted front living room which is also open plan to the dining room at the rear. Also on the ground floor are a modern kitchen and bathroom.

On the first floor are three generous sized bedrooms. The main bedroom is large, with the bay window and single window to the side. The two further bedrooms are located at the back of the house and overlook the garden.

This really is a special property with a large south facing garden and gated side access. Viewing slots are sure to fill up fast so please call promptly to avoid disappointment.



Please note:

1. The photographs may have been taken using a wide angle lens.
2. Any services, heating systems, appliances or installations referred to in these particulars have not been tested and no warranty can be given that these are in working order. Whilst we believe these particulars to be correct we would be pleased to check any information of particular interest to you.
3. We endeavour to make our sales details accurate and reliable, but they should not be relied on as statements or representations of fact and they do not constitute any part of an offer or contract. The seller does not make any representation or give any warranty in relation to the property, and we have no authority to do so on behalf of the seller.
4. Please contact us before viewing the property. If there is any point of particular importance to you we will be pleased to provide additional information or to make further enquiries. We will also confirm that the property is still available. This is particularly important if you are contemplating travelling some distance to view the property.
5. Any floor plans provided are not drawn to scale and are produced as an indicative rough guide only to help illustrate and identify the general layout of the property.
6. Any reference to alterations to, or use of, any part of the property is not a statement that any necessary planning, building regulations, listed buildings or other consents have been obtained. These matters must be verified by any intending buyer.